

Ventricular assist device for a coronavirus disease 2019-affected heart

Tienush Rassaf^{1*}, Matthias Totzeck¹, Amir A. Mahabadi¹, Ulrike Hendgen-Cotta¹, Sebastian Korste¹, Stephan Settelmeier¹, Peter Luedike¹, Ulf Dittmer², Frank Herbstreit³, Thorsten Brenner³, Karin Klingel⁴, Mike Hasenberg⁵, Bernd Walkenfort⁵, Matthias Gunzer⁵, Thomas Schlosser⁶, Alexander Weymann⁷, Markus Kamler⁷, Bastian Schmack⁷ and Arjang Ruhparwar⁷

¹Department of Cardiology and Vascular Medicine, West German Heart and Vascular Center Essen, University Hospital Essen, Essen, Germany; ²Institute for Virology, University Hospital Essen, Essen, Germany; ³Department of Anesthesiology and Intensive Care Medicine, University Hospital Essen, Essen, Germany; ⁴Department of Cardiopathology, University Hospital Tuebingen, Tuebingen, Germany; ⁵Institute for Experimental Immunology and Imaging, University Hospital Essen, Essen, Germany; ⁶Institute for Diagnostic and Interventional Radiology and Neuroradiology, University Hospital Essen, Essen, Germany; ⁷Department of Thoracic and Cardiovascular Surgery, West German Heart and Vascular Center Essen, University Hospital Essen, Essen, Germany

Abstract

Coronavirus disease 2019 (COVID-19) is challenging the care for cardiovascular patients, resulting in serious consequences with increasing mortality in pre-diseased heart failure patients. In the current state of the pandemic, the physiopathology of COVID-19 affecting pre-diseased hearts and the management of terminal heart failure in COVID-19 patients remain unclear. We outline the findings of a young COVID-19 patient suffering from idiopathic cardiomyopathy who was treated for acute multi-organ failure and required cardiac surgery with implantation of a temporary right ventricular and durable left ventricular assist device (LVAD). For deeper translational insights, we used in-depth tissue analysis by electron and light sheet fluorescence microscopy revealing evidence for spatial distribution of severe acute respiratory syndrome coronavirus 2 in the heart. This indicates that in-depth analysis may represent a valuable tool in understanding indistinct clinical cases. We conclude that COVID-19 directly affects pre-diseased hearts, but the consequences can be treated successfully with LVAD implantation.

Keywords COVID-19; SARS-CoV-2; Light sheet microscopy; Electron microscopy

Received: 12 August 2020; Revised: 6 October 2020; Accepted: 2 November 2020

*Correspondence to: Tienush Rassaf, Department of Cardiology and Vascular Medicine, West German Heart and Vascular Center Essen, University Hospital Essen, Hufelandstr. 55 45147 Essen, Germany. Tel: +49 201 723 4801; Fax: +49 201 723 5401. Email: tienush.rassaf@uk-essen.de

Prof. Tienush Rassaf and Prof. Matthias Totzeck share first authorship.

Dr. Bastian Schmack and Prof. Arjang Ruhparwar share senior authorship.

[Correction added on 5 December 2020, after first online publication: Projekt Deal funding statement has been added.]

Introduction

Severe acute respiratory syndrome coronavirus 2 (SARS-CoV-2) infection affects the cardiovascular system, contributing to acute coronary syndromes, arrhythmia, myocarditis, and heart failure.^{1,2} We report a coronavirus disease 2019 (COVID-19)-induced cardiogenic shock in a young patient with a history of cardiomyopathy with reduced left ventricular ejection fraction (LVEF) who was treated by emergency surgery and left ventricular assist device (LVAD) implantation. This first case of a young pre-diseased patient unquestionably shows that COVID-19 directly affects pre-diseased hearts but can be treated successfully with LVAD implantation.

Case report

Clinical manifestation and evolution

A 30-year-old male patient with a history of idiopathic cardiomyopathy with reduced LVEF was referred to our emergency department with clinical signs of respiratory failure. He presented with fever, tachypnoea, and laboratory tests indicating sepsis. Initial N-terminal prohormone of brain natriuretic peptide (NT-proBNP) was 71 022 pg/mL, C-reactive protein was 16.1 mg/dL, interleukin 6 (IL-6) was 282 pg/mL, and procalcitonin (PCT) was 0.5 ng/mL (Figure 1B, Table S1). During his repeated outpatient surveillance visits before, he had never presented with signs of decompensation or

exertional dyspnoea and always presented with a stable disease with a 3D LVEF of 23%. Endomyocardial biopsy performed 5 months before the acute episode did not show acute inflammatory involvement nor signs for amyloidosis or M. Fabry. Initial real-time qRT-PCR testing as well as further real-time qRT-PCR and IgG-antibody tests for SARS-CoV-2 were positive during the entire hospitalization (Table 1). The chain of infection was not investigated.

Respiratory and low-output heart failure required early oral intubation and implantation of a veno-arterial extracorporeal membrane oxygenation (VA-ECMO) system directly at admission. Echocardiography further confirmed terminal heart failure and reduced contractility [severely impaired systolic LV function (3D LVEF 6%, global longitudinal strain -1.0%), LV dilatation (LV end-diastolic diameter 8.5 cm, E-point septal separation distance 3.6 cm, LV end-diastolic volume 400 mL), impaired right ventricular function (tricuspid annular plane excursion 9 mm), RV dilatation (RV end-diastolic diameter basal 6.4 cm), and severe functional mitral regurgitation]. Later, the partial recovery of respiratory functions and the VA-ECMO allowed for respirator weaning. Owing to prolonged haemodynamic instability and cardiogenic shock, without realistic option for VA-ECMO weaning, the emergency heart failure board decided for cardiac surgery based on the patient's and patient's family consent. Nevertheless, owing to prolonged haemodynamic instability and cardiogenic shock, the emergency heart failure board decided for cardiac surgery based on the patient's consent. At that time, NT-proBNP was 163 837 pg/mL, C-reactive protein raised to 24.5 mg/dL, IL-6 to 124 pg/mL, and PCT to 7.73 ng/mL (Table S1). The patient was referred to heart surgery with LVAD as therapeutic bridge-to-transplant option, percutaneous temporary right ventricular assist device (RVAD) implantation,³ and tricuspid repair on Hospital Day 13. Hereafter, weaning from the RVAD was successful 2 weeks after implantation. Imaging confirmed successful recovery from COVID-19-associated sepsis and cardiogenic shock (Figure 1A and B). The patient was further initially treated with convalescent serum of COVID-19 patients for 5 days. Initial angiotensin-converting enzyme (ACE) inhibitor treatment (ramipril 5 mg twice daily) was discontinued at the time of hospital admission.

Surgical myocardial biopsy

Because SARS-CoV-2 may directly affect pre-diseased hearts,⁴ a heart sample obtained during surgery was used for evaluation. Conventional, immunohistochemical, transmission electron, and light sheet fluorescence microscopy (LSFM) were performed on a heart sample obtained during cardiac surgery. Histology and transmission electron microscopy (TEM) confirmed moderate dilated cardiomyopathy but no lymphocytic myocarditis (Figure 1C and Figure S4). As by real-time

qRT-PCR, as reported in other patients with fatal outcomes from COVID-19,^{4,5} SARS-CoV-2-RNA was not detected within the myocardium, and TEM was used as it might discover coronavirus particles in the hearts of patients.⁶ We found structures with high similarities to SARS virus within the patient's heart cells (Figure 1D and E). We did not find viral factories indicating virus replication, but multivesicular bodies, which are similar in structure (Figure S5). We 3D-analysed expression levels of the ACE2 receptor and transmembrane protease, Serin 2 (TMPRSS2), potentially required for cardiac viral uptake.⁷ LSFM⁸ could show focal ACE2 and TMPRSS2 expression (Figure 1F). In-depth analysis showed a spatial overlap of ACE2 expression with SARS-CoV-2 spike protein staining performed with specific antibodies, further implicating the presence of SARS-CoV-2 in the patient's heart (Figure 1F). Similar findings could be obtained using SARS-CoV-2 nucleocapsid protein staining (Figure S1).

Discussion

While the management of patients on durable LVAD support with COVID-19 infection has been reported and discussed,^{9–11} we here report, to the best of our knowledge, the first case of a young COVID-19 patient with acute heart failure being recommendation adherent^{12,13} treated successfully with LVAD implantation.

A biventricular assist device would have been an alternative approach, but regarding the underlying cardiomyopathy, this episode of life-threatening decompensation was rather acute on chronic. Another approach would have been the implantation of a total artificial heart (TAH). Owing to the patient's status, the results of a TAH procedure were regarded as unfavourable in the patient as surgical trauma would have been unequally larger than LVAD surgery. Within our heart failure heart team, we assessed this patient to be a good candidate for durable LVAD support with temporary groin-free RVAD,³ assuming the acute COVID-19 infection to be one major and reversible issue impairing the RV. However, the high haemocompatibility of the HeartMate 3 device remains outstanding. Still, there is evidence of (pro-)coagulopathy in florid COVID-19 infection. Hence, we decided to use this specific LVAD, which has proven its very low incidence of pump thrombosis, even in patients with deranged coagulation system.

It is unknown if SARS-CoV-2 replicates within the cardiomyocyte resulting in viral myocarditis or if COVID-19 affects pre-diseased hearts.^{6,14} While we found no evidence for active viral replication within the cardiomyocyte or for fulminant myocarditis, we found indications for SARS-CoV-2 in the patient's heart that could have been affected the pre-diseased heart. The viral antigen's focal distribution might explain negative real-time qRT-PCR results in individual samples, underscoring the importance of microscopy-based

Figure 1 Implantation of a left ventricular assist device in a severe acute respiratory syndrome coronavirus 2 (SARS-CoV-2)-affected heart. (A) Echocardiographic findings with severely reduced left ventricular ejection fraction, massive ventricular dilation with left ventricular end-diastolic diameter of 8.5 cm (M-mode acquisition), and diffusely reduced regional and global strain indicating poor contractility (top of A). Computed tomography before and after surgery and regression of coronavirus disease 2019 (COVID-19)-related pulmonary infiltrates. Surgical preparation of the left ventricle for LVAD implantation is shown in the middle section of (A). (B) Course of laboratory parameters indicating sepsis [procalcitonin (PCT), C-reactive protein (CRP), and interleukin 6 (IL-6)]. (C) Conventional histology and immunostaining on 2D sections of heart tissue indicating dilated cardiomyopathy [haematoxylin and eosin (HE) stain], moderate increase of collagen [Masson's trichrome stain (MTS)] without increases in T cells (CD3 immunostaining), and moderate increases in macrophages (CD68 immunostaining). (D) Transmission electron microscopy images implicating the presence of SARS-CoV-2 in cardiomyocytes (top two images) and endothelial cells (bottom two images). (E) Tomography of a representative particle was segmented for visualization. (F) Light sheet fluorescence microscopy of a heart sample in 3D analysis for the focal visualization of angiotensin-converting enzyme 2 (ACE2), transmembrane protease, serin 2 (TMPRSS2), and SARS-CoV-2 spike protein. Scale bars are displayed in micrometres.

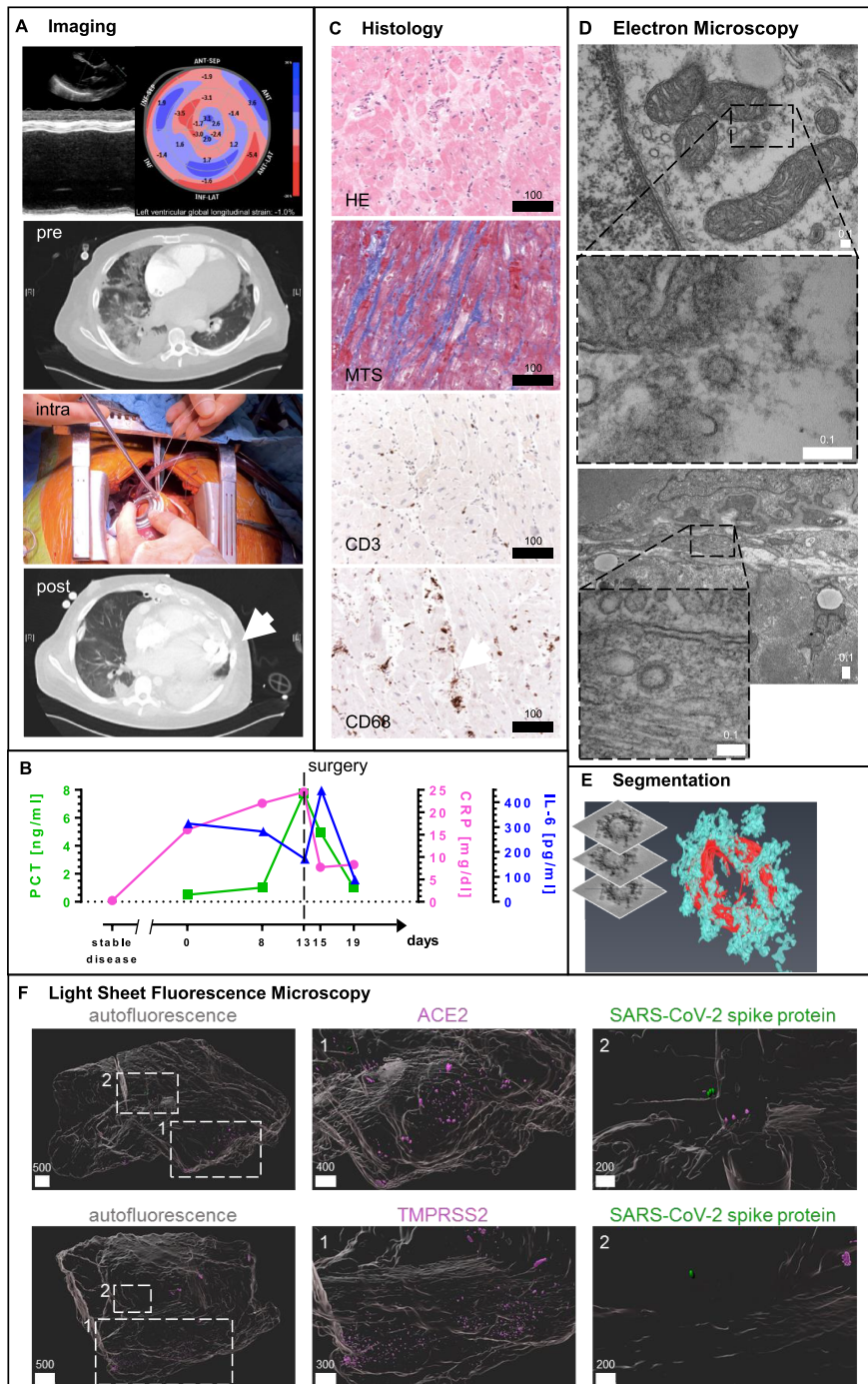


Table 1 Time course of SARS-CoV-2 testing in the patient

Day of hospitalization	Method	Sample origin	Result
0	SARS-CoV-2-RNA RT-PCR	Nasal swab testing	Positive
1	SARS-CoV-2-RNA RT-PCR	Bronchoalveolar lavage	Positive
8	SARS-CoV-2-RNA RT-PCR	Sputum	Positive
10	SARS-CoV-2-RNA RT-PCR	Bronchoalveolar lavage	Positive
20	SARS-CoV-2-RNA RT-PCR	Bronchoalveolar lavage	Positive
31	Anti-SARS-CoV-2-IgG	Blood sample	Positive

Testing was positive during the whole hospitalization period. Indicated are days of hospitalization, method, and origin of testing and results.

diagnostics and warranting further studies for heart-organotropism in COVID-19 patients.¹⁵ With the benefit of the analysis of the spatial antigen distribution, LSFM may serve as a valuable tool in evaluating difficult or indistinct clinical cases, supporting and exceeding traditional methods. Even if we could not completely specify if the viral organotropism or the COVID-19 induced sepsis finally lead to the peracute life-threatening heart failure exacerbation, this unique report presents that a severe COVID-19 case with indications for SARS-CoV-2 in the heart was and can be treated successfully by LVAD implantation.

The study complies with the Declaration of Helsinki and was approved by the local ethics committee of the Medical Faculty, University of Duisburg-Essen, Germany (Ethics Approval Nr. 19-8982-BO for the LSFM imaging study). The patient was included in the Essen University CovCor Registry (NCT04327479, 20-9213-BO). Written informed consent was obtained from the patient.

Acknowledgement

Open access funding enabled and organized by Projekt DEAL.

Conflict of interest

The authors declare no conflict of interest.

Supporting information

Additional supporting information may be found online in the Supporting Information section at the end of the article.

References

1. Madjid M, Safavi-Naeini P, Solomon SD, Vardeny O. Potential effects of coronaviruses on the cardiovascular system: a review. *JAMA Cardiol* 2020; 5: 831–840.
2. Tomasoni D, Italia L, Adamo M, Inciardi RM, Lombardi CM, Solomon SD, Metra M. COVID-19 and heart failure: from infection to inflammation and angiotensin II stimulation. Searching for evidence from a new disease. *Eur J Heart Fail* 2020; 22: 957–966.
3. Schmack B, Farag M, Kremer J, Grosseckler L, Brcic A, Raake PW, Kreuzer MM, Goldwasser R, Popov AF, Mansur A, Karck M, Ruhparwar A. Results of concomitant groin-free percutaneous temporary RVAD support using a centrifugal pump with a double-lumen jugular venous cannula in LVAD patients. *J Thorac Dis* 2019; 11: S913–S920.

Data S1. Implantation of a left ventricular assist device in a severe acute respiratory syndrome coronavirus 2 (SARS-CoV-2)-affected heart. (A) Echocardiographic findings with severely reduced left ventricular ejection fraction, massive ventricular dilation with left ventricular end-diastolic diameter of 8.5 cm (M-mode acquisition), and diffusively reduced regional and global strain indicating poor contractility (top of A). Computed tomography before and after surgery and regression of coronavirus disease 2019 (COVID-19)-related pulmonary infiltrates. Surgical preparation of the left ventricle for LVAD implantation is shown in the middle section of (A). (B) Course of laboratory parameters indicating sepsis [procalcitonin (PCT), C-reactive protein (CRP), and interleukin 6 (IL-6)]. (C) Conventional histology and immunostaining on 2D sections of heart tissue indicating dilated cardiomyopathy [haematoxylin and eosin (HE) stain], moderate increase of collagen [Masson's trichrome stain (MTS)] without increases in T cells (CD3 immunostaining), and moderate increases in macrophages (CD68 immunostaining). (D) Transmission electron microscopy images implicating the presence of SARS-CoV-2 in cardiomyocytes (top two images) and endothelial cells (bottom two images). (E) Tomography of a representative particle was segmented for visualization. (F) Light sheet fluorescence microscopy of a heart sample in 3D analysis for the focal visualization of angiotensin-converting enzyme 2 (ACE2), transmembrane protease, serin 2 (TMPRSS2), and SARS-CoV-2 spike protein. Scale bars are displayed in micrometres.

Time course of SARS-CoV-2 testing in the patient.

4. Puelles VG, Lutgehetmann M, Lindenmeyer MT, Sperhake JP, Wong MN, Allweiss L, Chilla S, Heinemann A, Wanner N, Liu S, Braun F. Multiorgan and renal tropism of SARS-CoV-2. *N Engl J Med* 2020; **383**: 590–592.
5. Escher F, Pietsch H, Aleshcheva G, Bock T, Baumeier C, Elsaesser A, Wenzel P, Hamm C, Westenfeld R, Schultheiss M, Gross U. Detection of viral SARS-CoV-2 genomes and histopathological changes in endomyocardial biopsies. *ESC Heart Failure* 2020 n/a(n/a).
6. Tavazzi G, Pellegrini C, Maurelli M, Belliato M, Sciutti F, Bottazzi A, Sepe PA, Resasco T, Camprotondo R, Bruno R, Baldanti F, Paolucci S, Pelenghi S, Iotti GA, Mojoli F, Arbustini E. Myocardial localization of coronavirus in COVID-19 cardiogenic shock. *Eur J Heart Fail* 2020; **22**: 911–915.
7. Nicin L, Abplanalp WT, Mellentin H, Kattih B, Tombor L, John D, Schmitto JD, Heineke J, Emrich F, Arsalan M, Holubec T, Walther T, Zeiher AM, Dimmeler S. Cell type-specific expression of the putative SARS-CoV-2 receptor ACE2 in human hearts. *Eur Heart J* 2020; **41**: 1804–1806.
8. Merz SF, Korste S, Bornemann L, Michel L, Stock P, Squire A, Soun C, Engel DR, Detzer J, Lörchner H, Hermann DM, Kamler M, Klode J, Hendgen-Cotta UB, Rassaf T, Gunzer M, Totzeck M. Contemporaneous 3D characterization of acute and chronic myocardial I/R injury and response. *Nat Commun* 2019; **10**: 2312.
9. Chau VQ, Oliveros E, Mahmood K, Singhvi A, Lala A, Moss N, Gidwani U, Mancini DM, Pinney SP, Parikh A. The imperfect cytokine storm: severe COVID-19 with ARDS in patient on durable LVAD support. *JACC Case Rep* 2020; **2**: 1315–1320.
10. DeFilippis EM, Reza N, Donald E, Givertz MM, Lindenfeld J, Jessup M. Considerations for heart failure care during the COVID-19 pandemic. *JACC Heart failure* 2020; **8**: 681–691.
11. Singh R, Domenico C, Rao SD, Urgo K, Prenner SB, Wald JW, Atluri P, Birati EY. Novel coronavirus disease 2019 in a patient on durable left ventricular assist device support. *J Card Fail* 2020; **26**: 438–439.
12. Ponikowski P, Voors AA, Anker SD, Bueno H, Cleland JGF, Coats AJS, Falk V, González-Juanatey JR, Harjola VP, Jankowska EA, Jessup M, Linde C, Nihoyannopoulos P, Parissis JT, Pieske B, Riley JP, Rosano GMC, Ruilope LM, Ruschitzka F, Rutten FH, van der Meer P, ESC Scientific Document Group. 2016 ESC Guidelines for the diagnosis and treatment of acute and chronic heart failure: The Task Force for the diagnosis and treatment of acute and chronic heart failure of the European Society of Cardiology (ESC) Developed with the special contribution of the Heart Failure Association (HFA) of the ESC. *Eur Heart J* 2016; **37**: 2129–2200.
13. van Diepen S, Katz JN, Albert NM, Henry TD, Jacobs AK, Kapur NK, Kilic A, Menon V, Ohman EM, Sweitzer NK, Thiele H, Washam JB, Cohen MG, American Heart Association Council on Clinical Cardiology, Council on Cardiovascular and Stroke Nursing, Council on Quality of Care and Outcomes Research; and Mission: Lifeline. Contemporary management of cardiogenic shock: a scientific statement from the American Heart Association. *Circulation* 2017; **136**: e232–e268.
14. Lindner D, Fitzek A, Bräuninger H, Aleshcheva G, Edler C, Meissner K, Scherschel K, Kirchhof P, Escher F, Schultheiss HP, Blankenberg S, Püschel K, Westermann D. Association of cardiac infection with SARS-CoV-2 in confirmed COVID-19 autopsy cases. *JAMA Cardiol* 2020; e203551.
15. Wenzel P, Kopp S, Göbel S, Jansen T, Geyer M, Hahn F, Kreitner KF, Escher F, Schultheiss HP, Münzel T. Evidence of SARS-CoV-2 mRNA in endomyocardial biopsies of patients with clinically suspected myocarditis tested negative for COVID-19 in nasopharyngeal swab. *Cardiovasc Res* 2020; **116**: 1661–1663.

DuEPublico

Duisburg-Essen Publications online

UNIVERSITÄT
DUISBURG
ESSEN

Offen im Denken

ub | universitäts
bibliothek

This text is made available via DuEPublico, the institutional repository of the University of Duisburg-Essen. This version may eventually differ from another version distributed by a commercial publisher.

DOI: 10.1002/ehf2.13120

URN: urn:nbn:de:hbz:465-20240809-091307-4



This work may be used under a Creative Commons Attribution - NonCommercial 4.0 License (CC BY-NC 4.0).